


Gesamtauswertung Probe 1

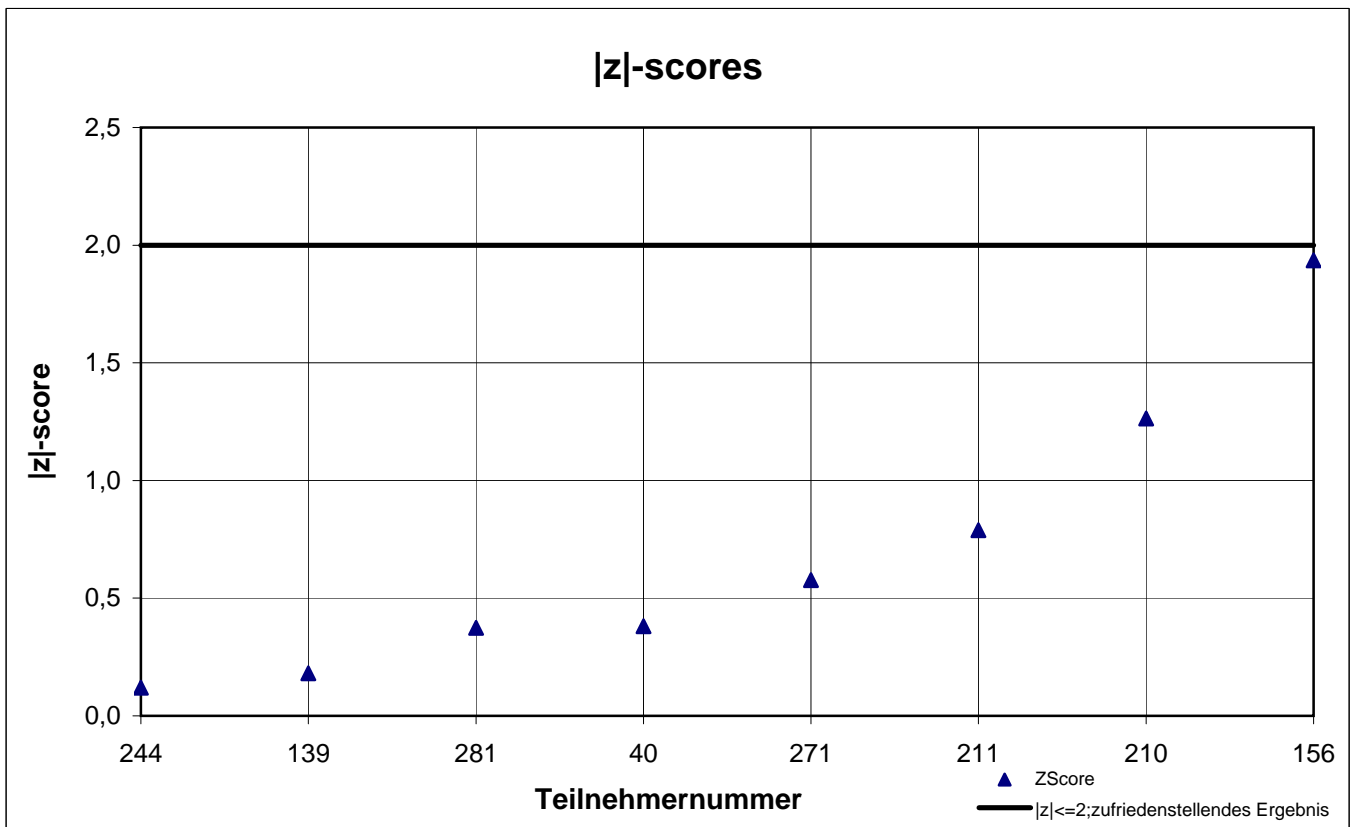
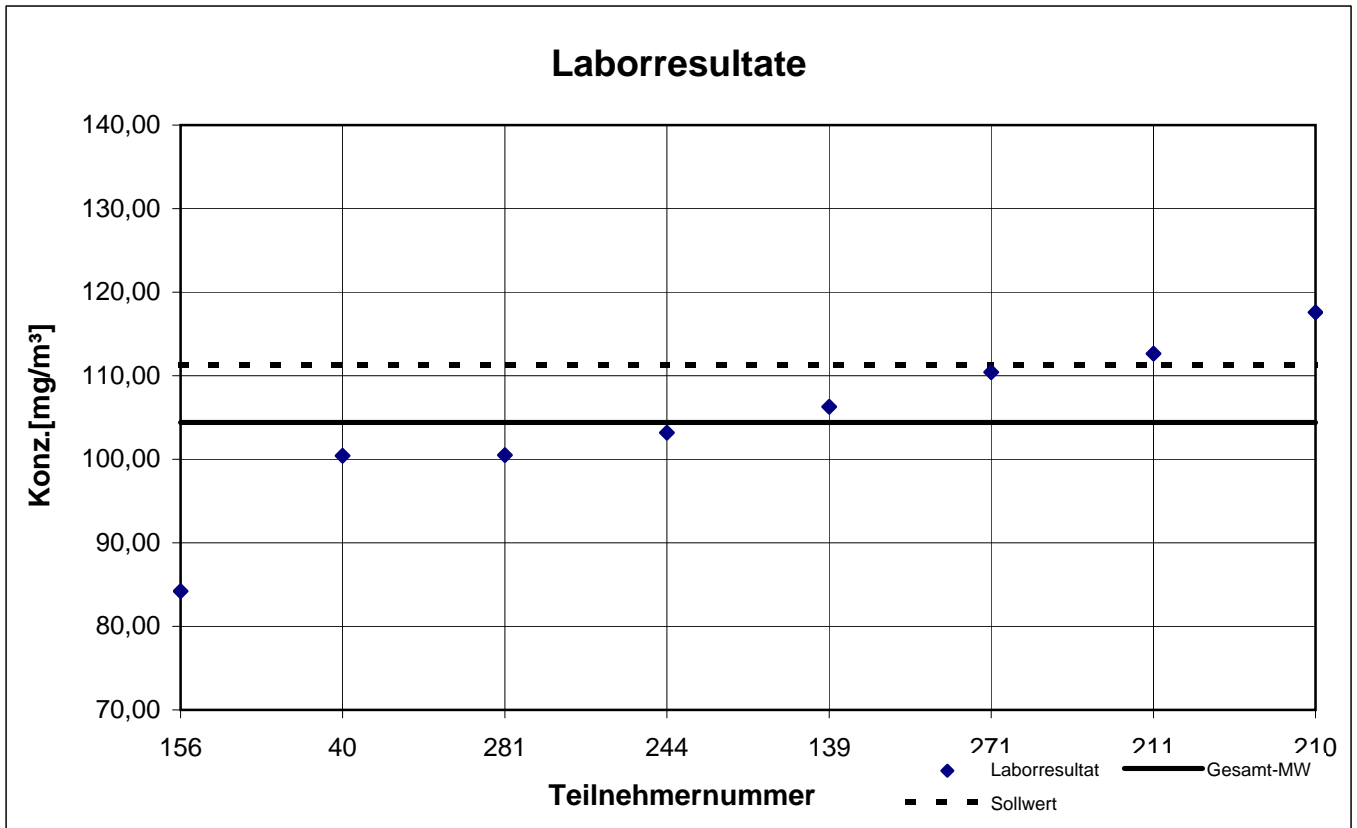
Teilnehmer- nummer	2-Butanon		4-Methyl-2-pentanon		Cyclohexanon		Cyclopentanon	
	Labor- resultat [mg/m ³]	z - score	Labor- resultat [mg/m ³]	z - score	Labor- resultat [mg/m ³]	z - score	Labor- resultat [mg/m ³]	z - score
40	100,4	0,4	33,90	1,0	38,97	3,1	102,8	0,8
75	k.A.	k.A.	37,08	0,2	k.A.	k.A.	k.A.	k.A.
139	106,3	0,2	37,37	0,1	26,37	1,1	93,77	0,1
156	84,20	1,9	36,10	0,4	28,10	0,6	92,20	0,3
210	117,6	1,3	45,37	2,0	36,30	2,2	105,0	1,1
211	112,6	0,8	35,74	0,5	24,84	1,6	87,51	0,8
244	103,2	0,1	39,63	0,5	28,43	0,4	88,97	0,6
271	110,4	0,6	37,14	0,2	25,15	1,5	94,94	0,0
281	100,5	0,4	k.A.	k.A.	k.A.	k.A.	k.A.	k.A.

Die mit  gekennzeichneten Felder sind Ausreißer!

	2-Butanon	4-Methyl-2- pentanon	Cyclo- hexanon	Cyclo- pentanon
Gesamtmittelwert c_k [mg/m ³]	104,4	37,79	29,74	95,04
Standardabweichung S_k [mg/m ³]	10,161	3,466	5,613	6,632
rel. Standardabweichung [%]	9,73	9,17	18,88	6,98
Sollwert (Belegungskonzentration) [mg/m ³]	111,3	39,10	31,40	96,30

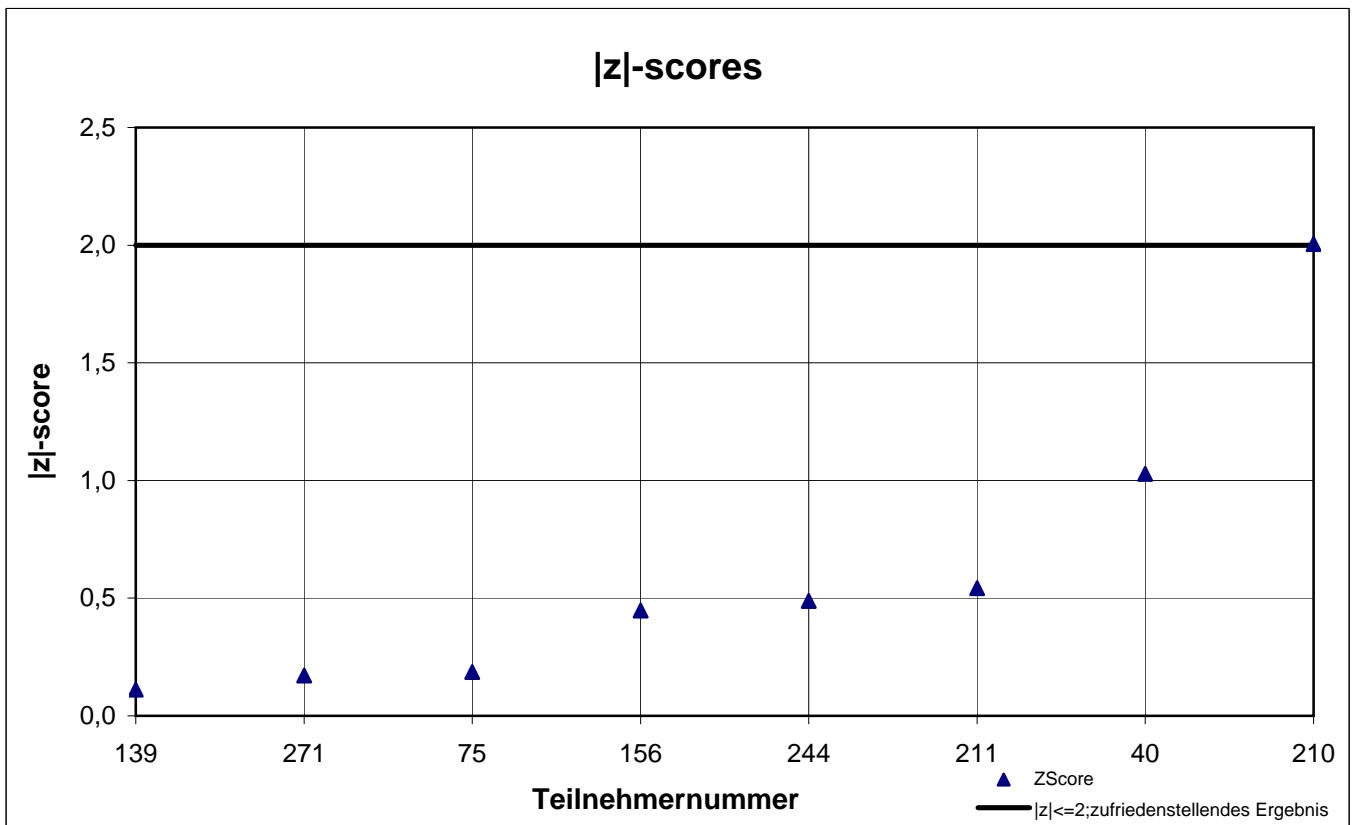
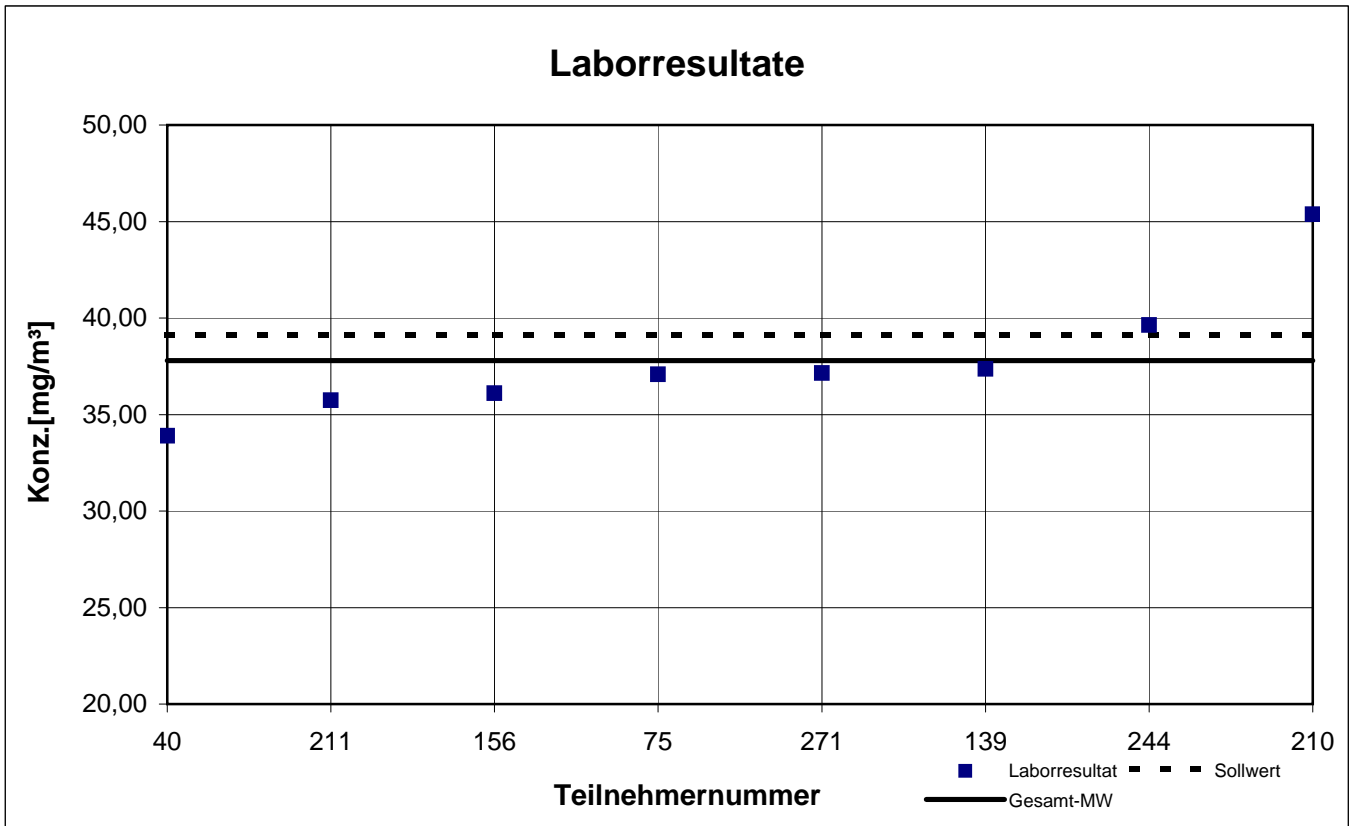
Probe 1

2-Butanon



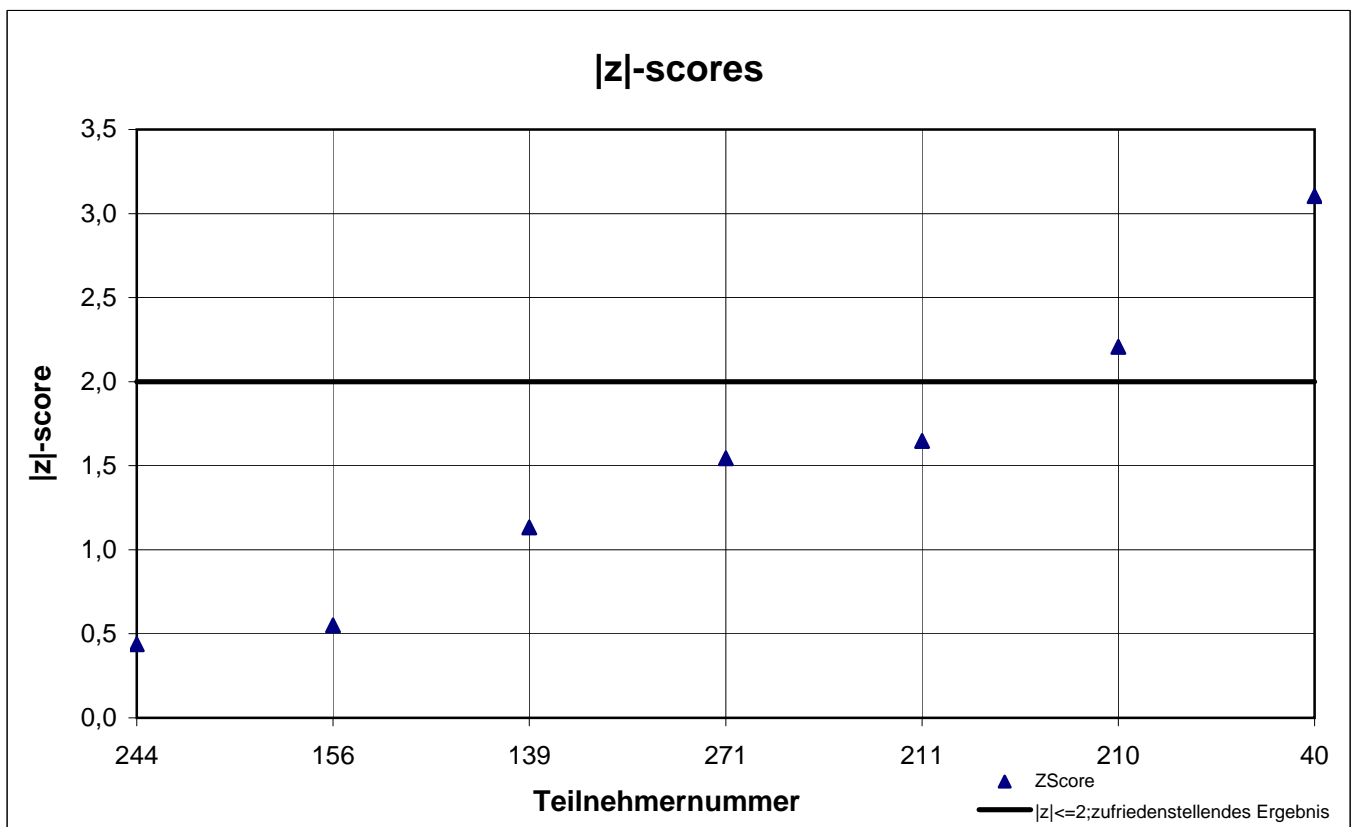
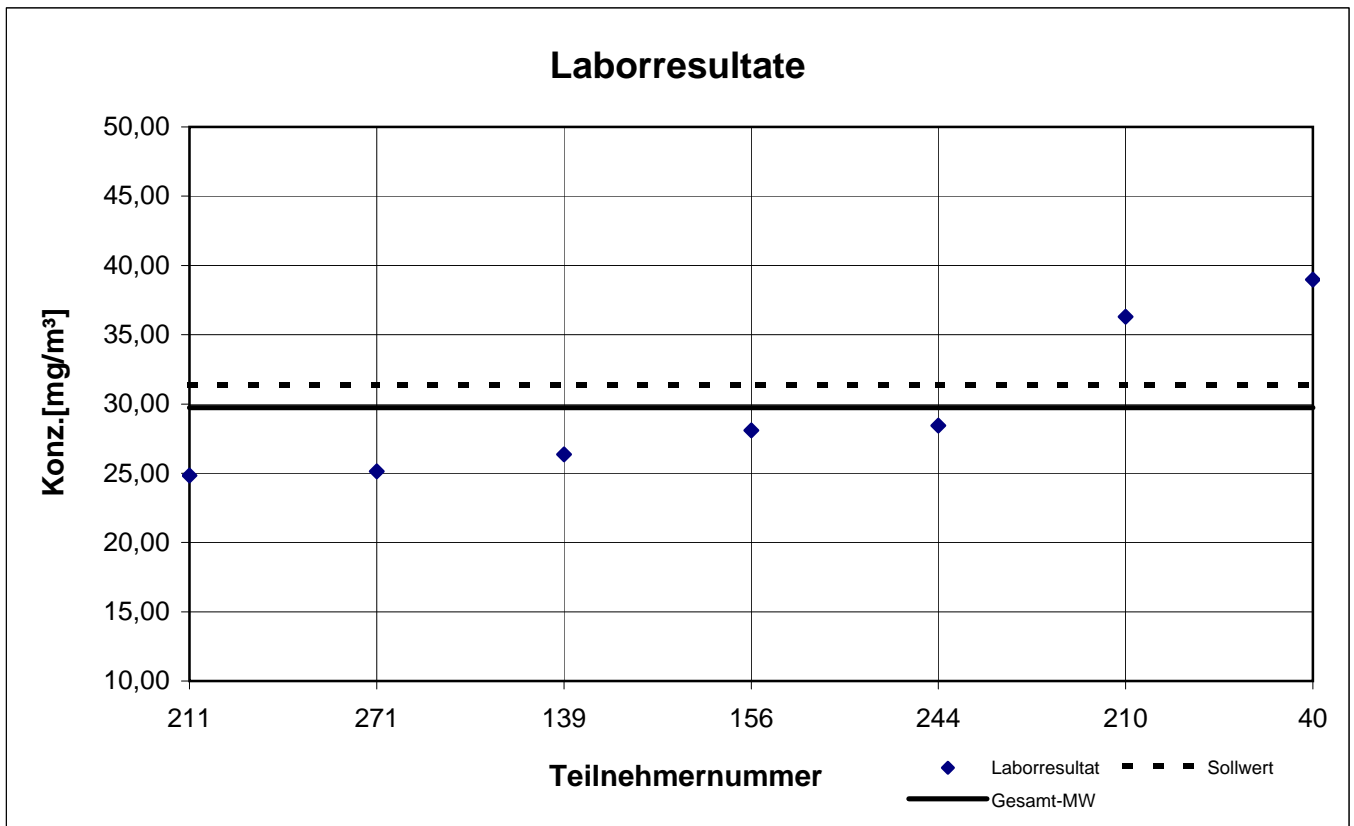
Probe 1

4-Methyl-2-pentanon



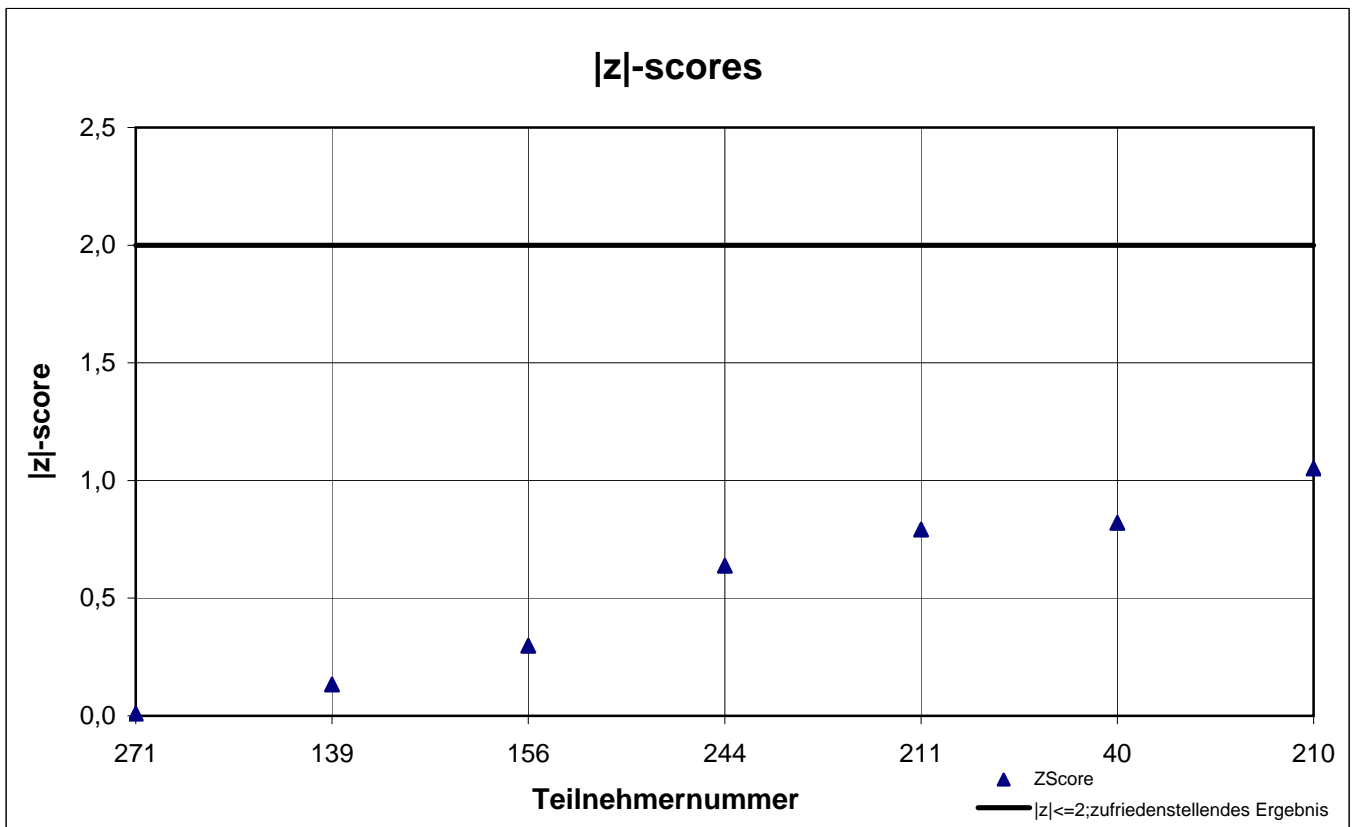
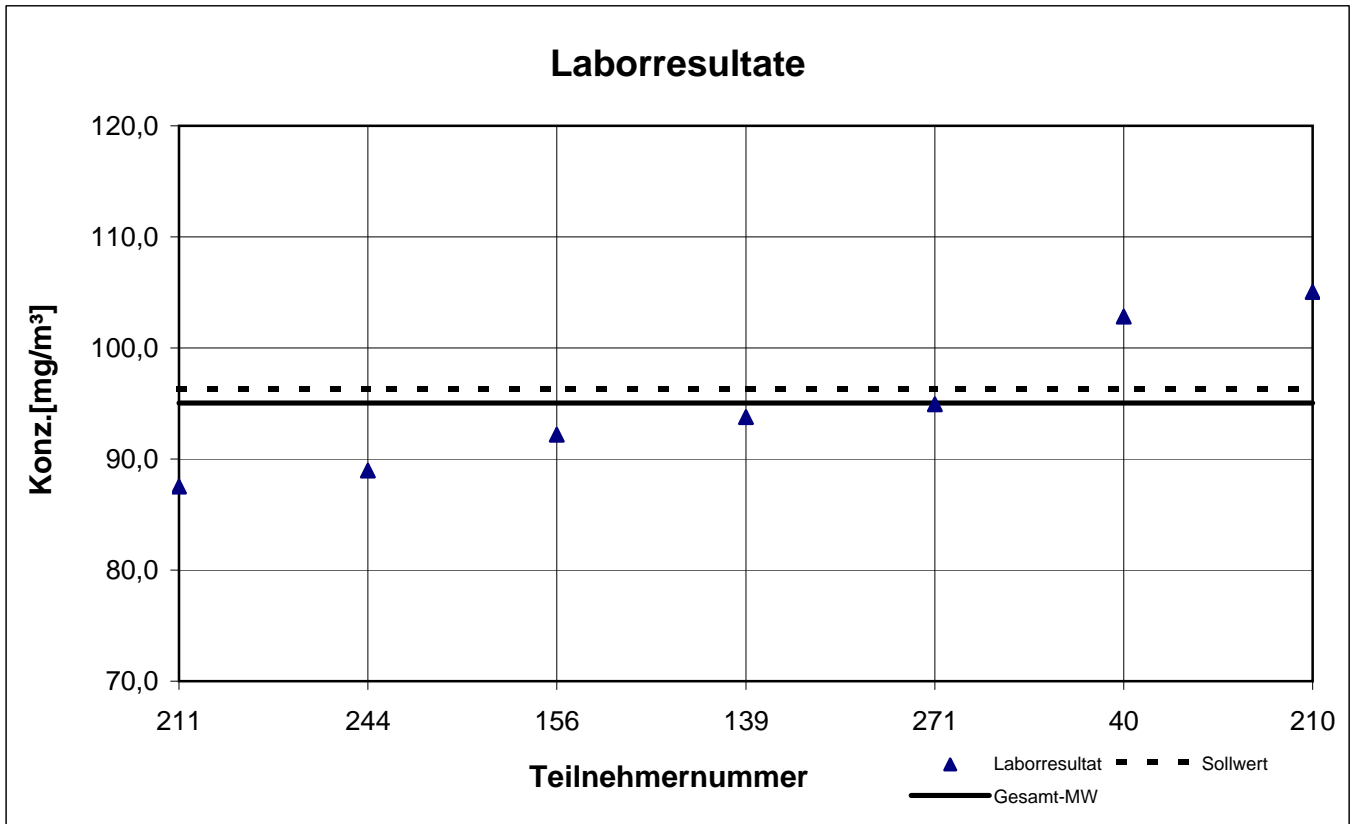
Probe 1

Cyclohexanon




Probe 1

Cyclopentanon



Gesamtauswertung Probe 2

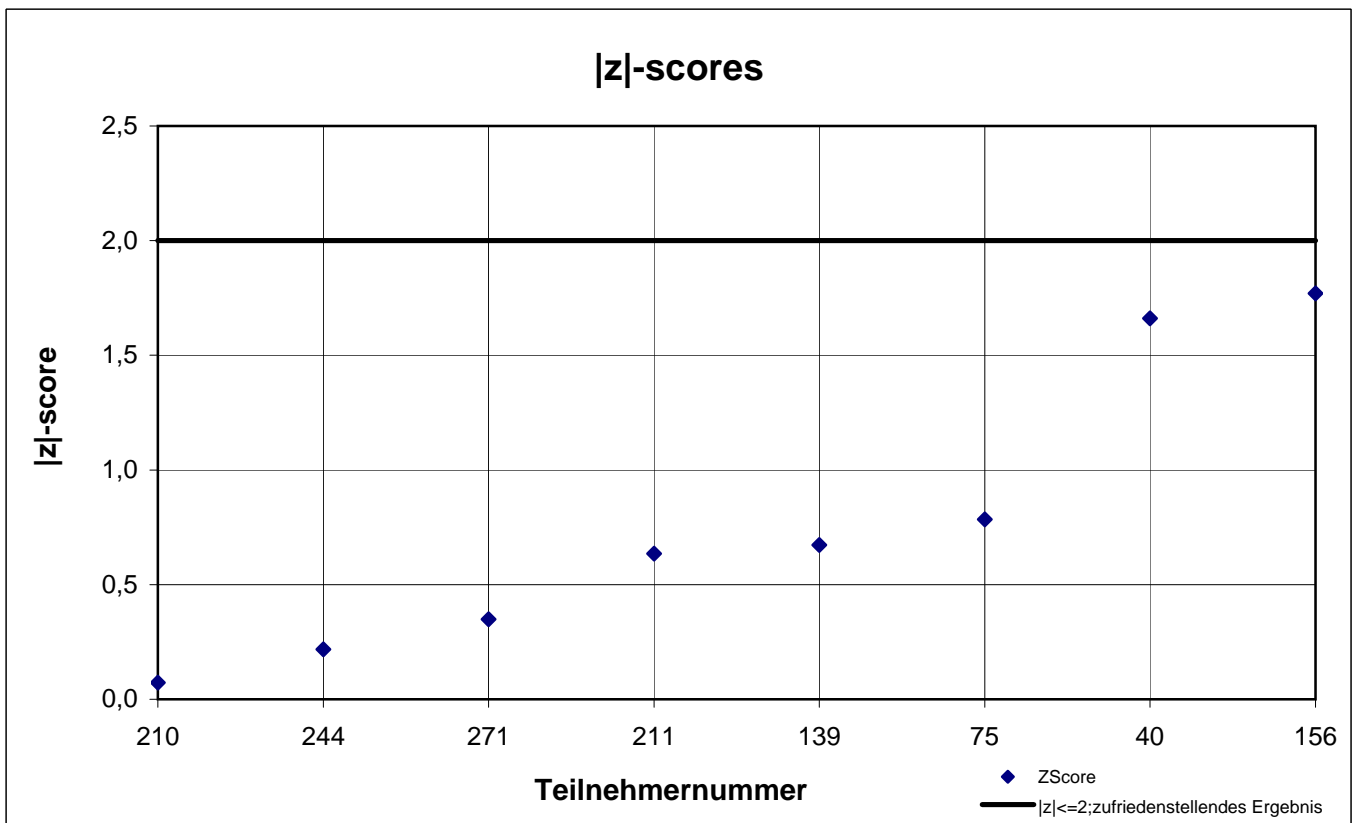
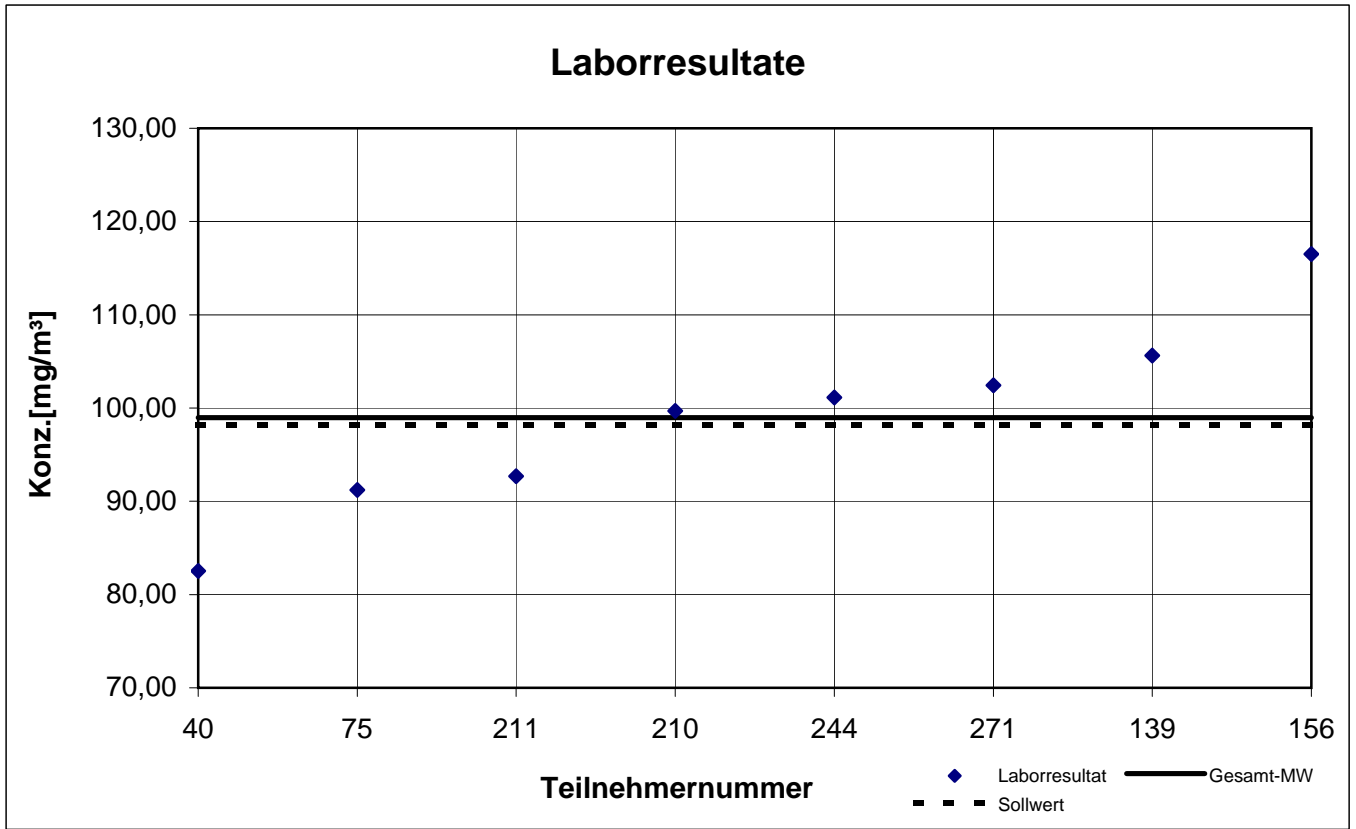
Teilnehmer- nummer	1-Butanol		Ethylbenzol		n-Butylacetat		n-Hexan		p-Xylol		Toluol	
	Labor- resultat [mg/m ³]	z - score	Labor- resultat [mg/m ³]	z - score	Labor- resultat [mg/m ³]	z - score	Labor- resultat [mg/m ³]	z - score	Labor- resultat [mg/m ³]	z - score	Labor- resultat [mg/m ³]	z - score
40	82,53	1,7	94,13	0,4	75,90	0,3	75,43	0,2	67,07	0,7	65,33	0,3
75	91,21	0,8	90,46	0,0	74,98	0,1	73,35	0,4	61,94	0,1	66,83	0,1
139	105,6	0,7	101,4	1,2	100,0	3,5	78,87	0,3	72,90	1,6	74,30	1,0
156	116,50	1,8	103,0	1,4	126,0	7,0	88,15	1,5	65,90	0,5	72,15	0,7
210	99,70	0,1	80,70	1,1	73,33	0,1	73,60	0,4	58,30	0,7	59,70	1,2
211	92,69	0,6	72,15	2,0	65,29	1,2	70,13	0,9	51,63	1,8	60,14	1,1
244	101,1	0,2	90,83	0,1	74,10	0,0	76,97	0,0	64,17	0,2	70,57	0,4
271	102,4	0,3	88,54	0,2	80,23	0,8	77,48	0,1	62,84	0,0	68,70	0,2
281	k.A.	k.A.	90,70	0,1	k.A.	k.A.	k.A.	k.A.	61,10	0,3	71,40	0,5

Die mit  gekennzeichneten Felder sind Ausreißer!

	1-Butanol	Ethyl- benzol	n-Butyl- acetat	n-Hexan	p-Xylol	Toluol
Gesamtmittelwert c_k [mg/m ³]	98,98	90,21	73,97	76,75	62,87	67,68
Standardabweichung S_k [mg/m ³]	10,273	9,515	4,893	5,373	5,919	5,169
rel. Standardabweichung [%]	10,38	10,55	6,62	7,00	9,41	7,64
Sollwert (Belegungskonzentration) [mg/m ³]	98,20	85,90	71,80	77,77	60,10	64,70

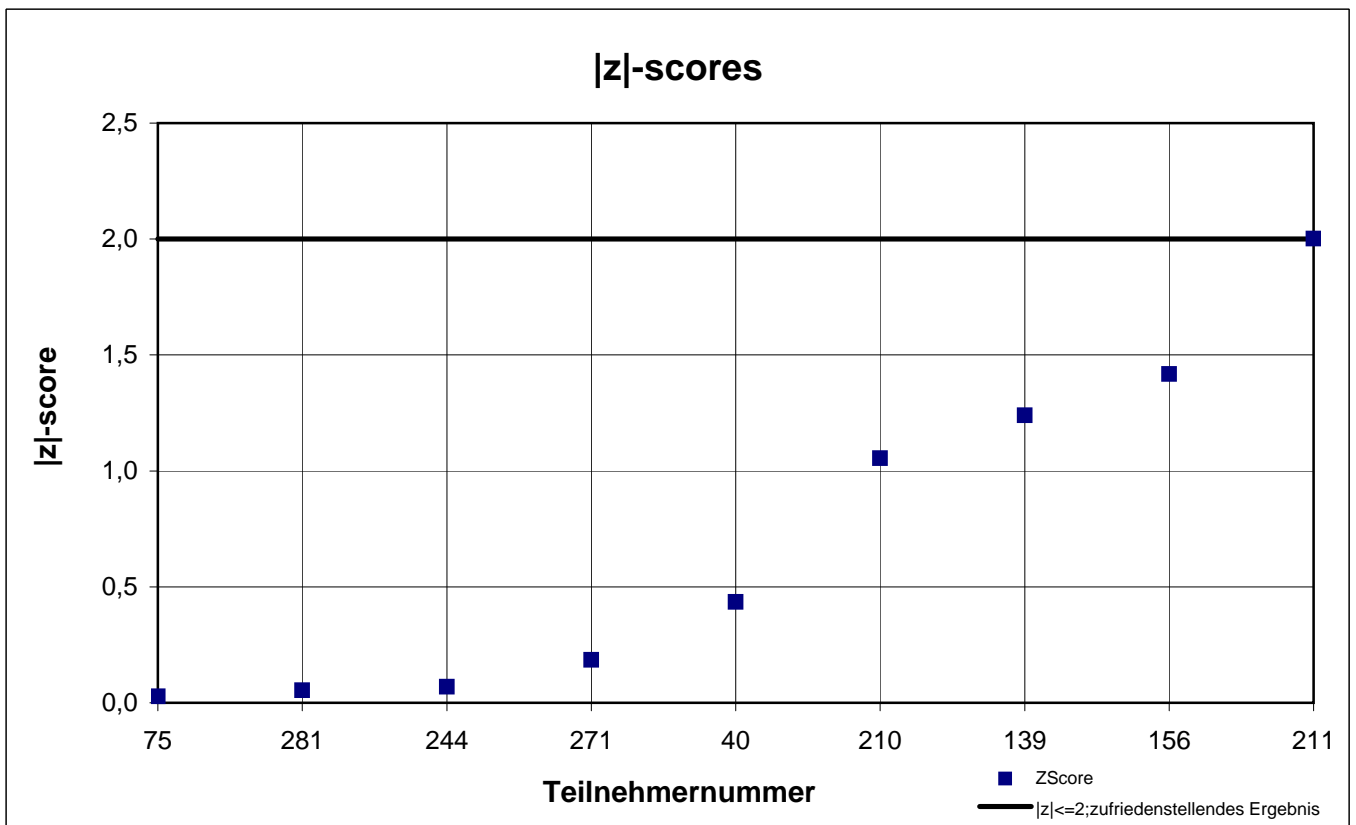
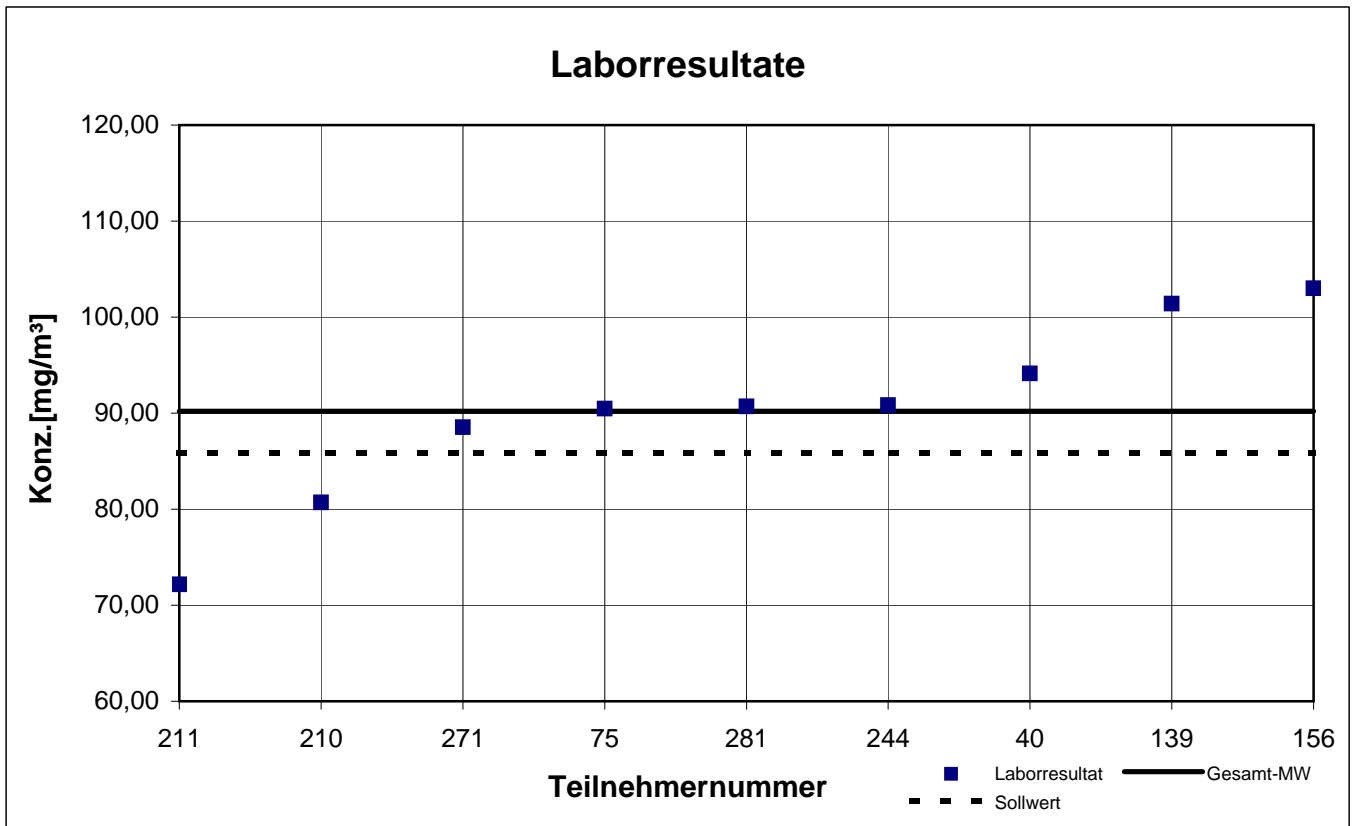
Probe 2

1-Butanol



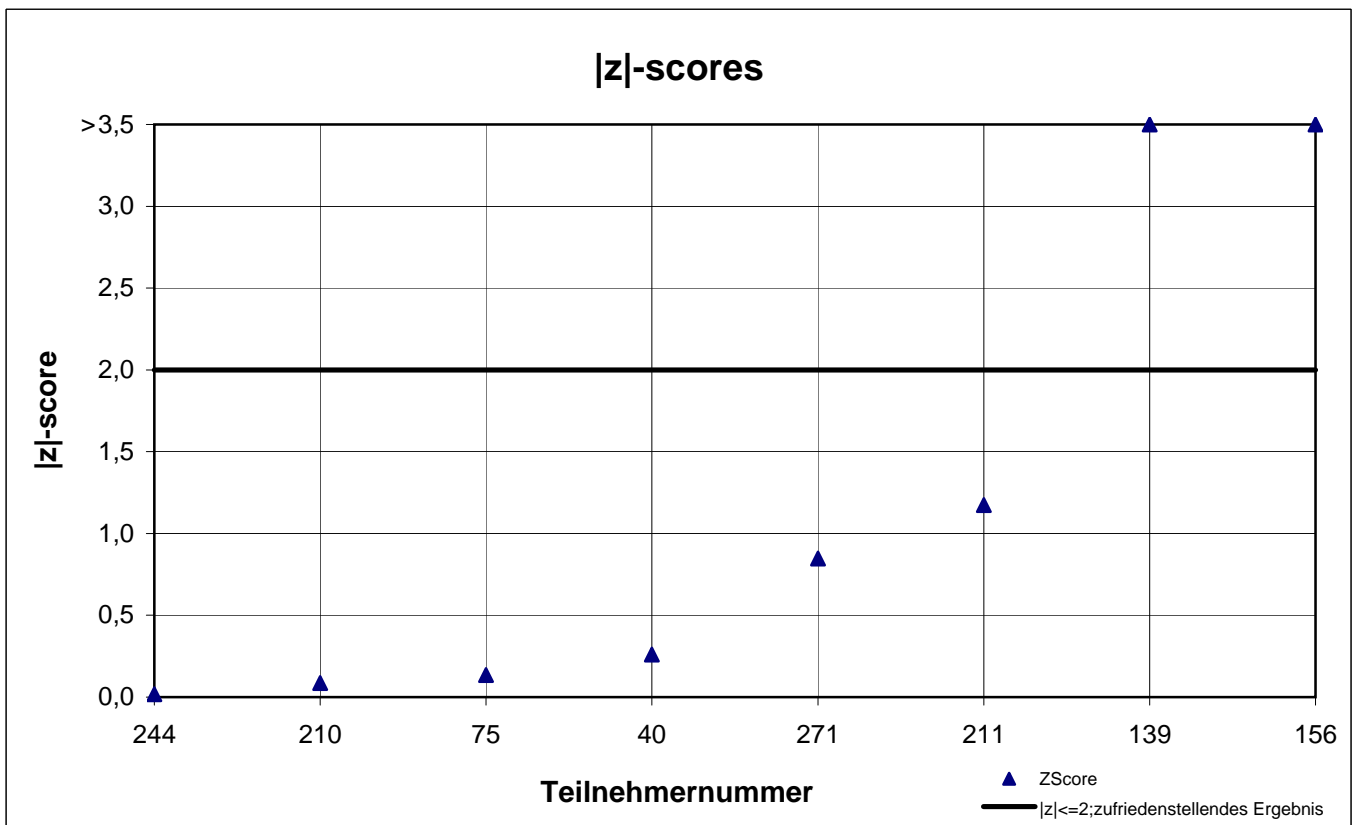
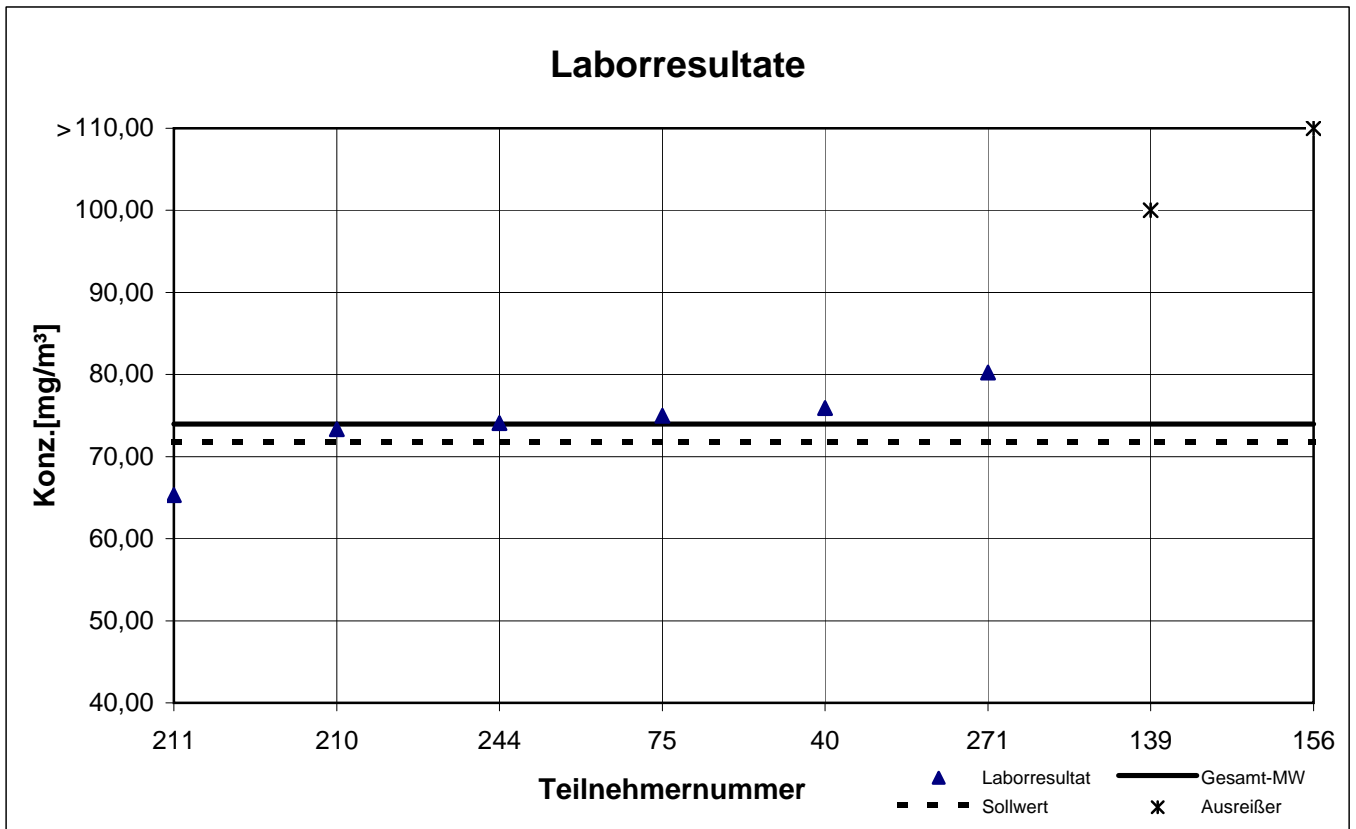
Probe 2

Ethylbenzol



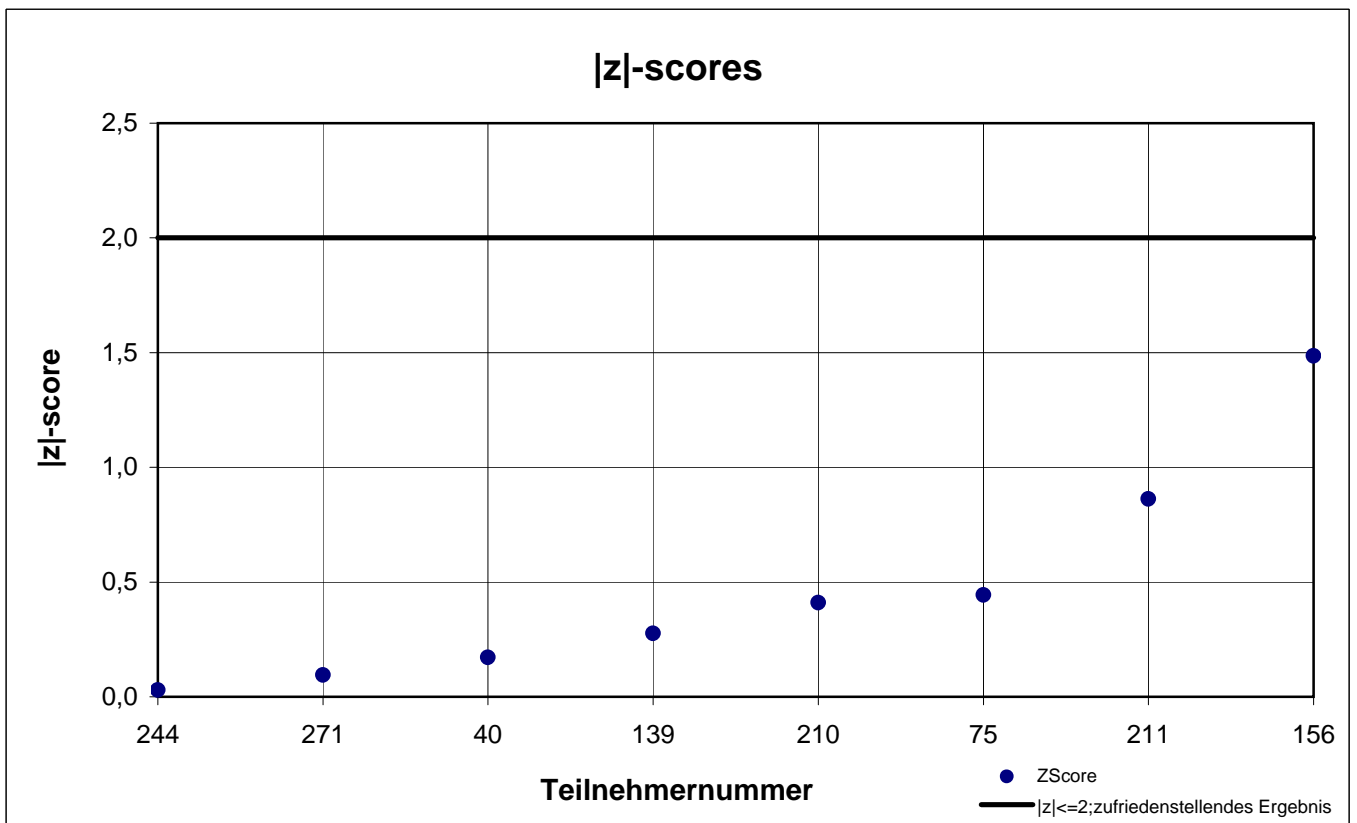
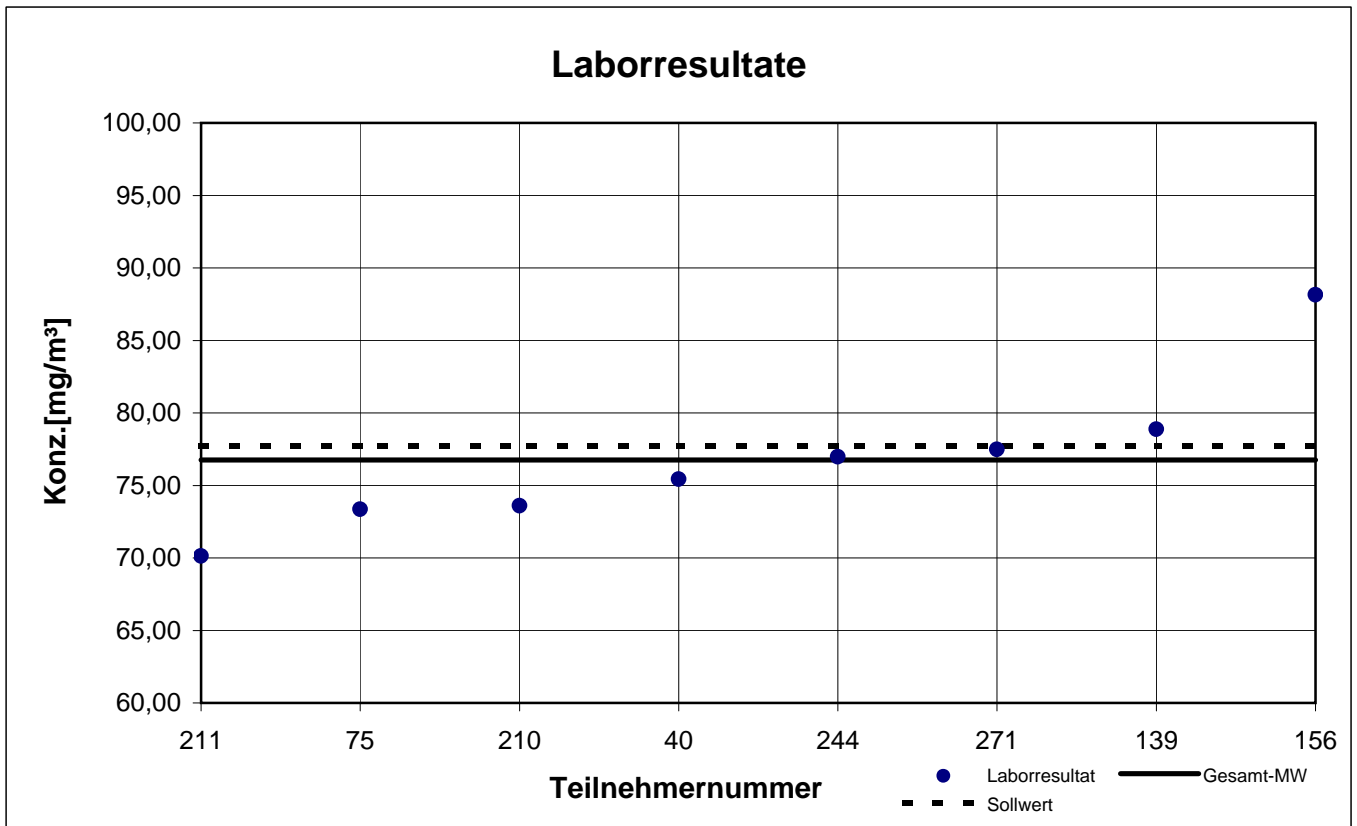
Probe 2

n-Butylacetat



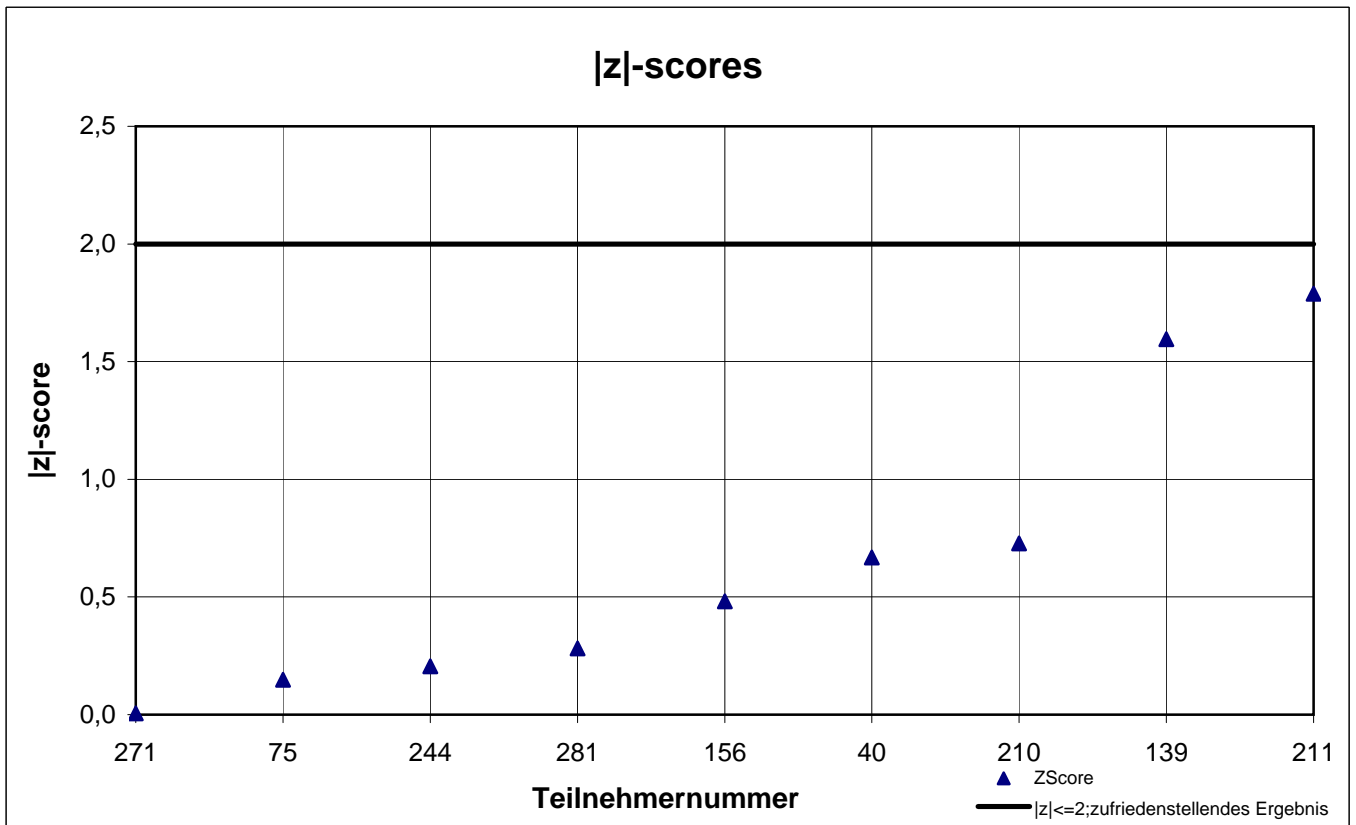
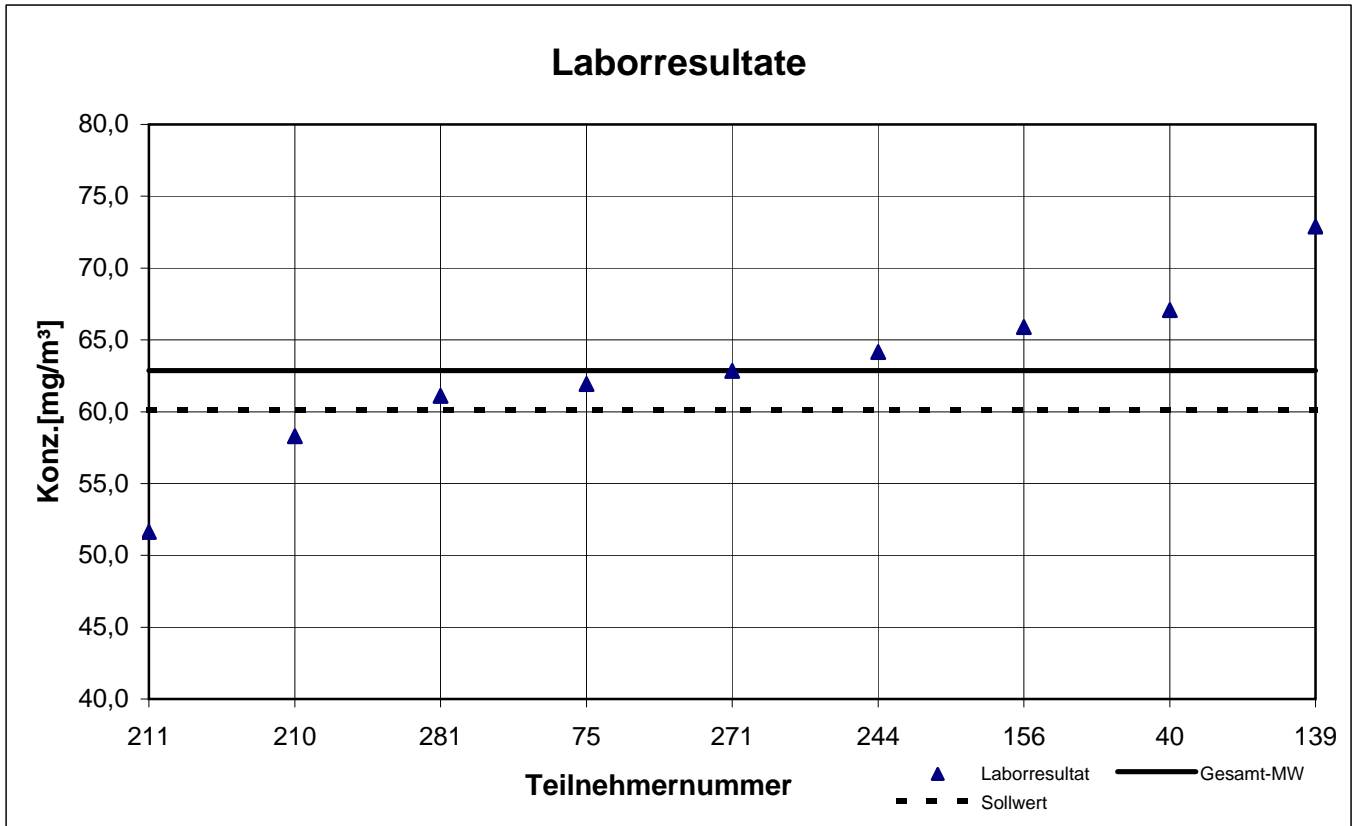
Probe 2

n-Hexan



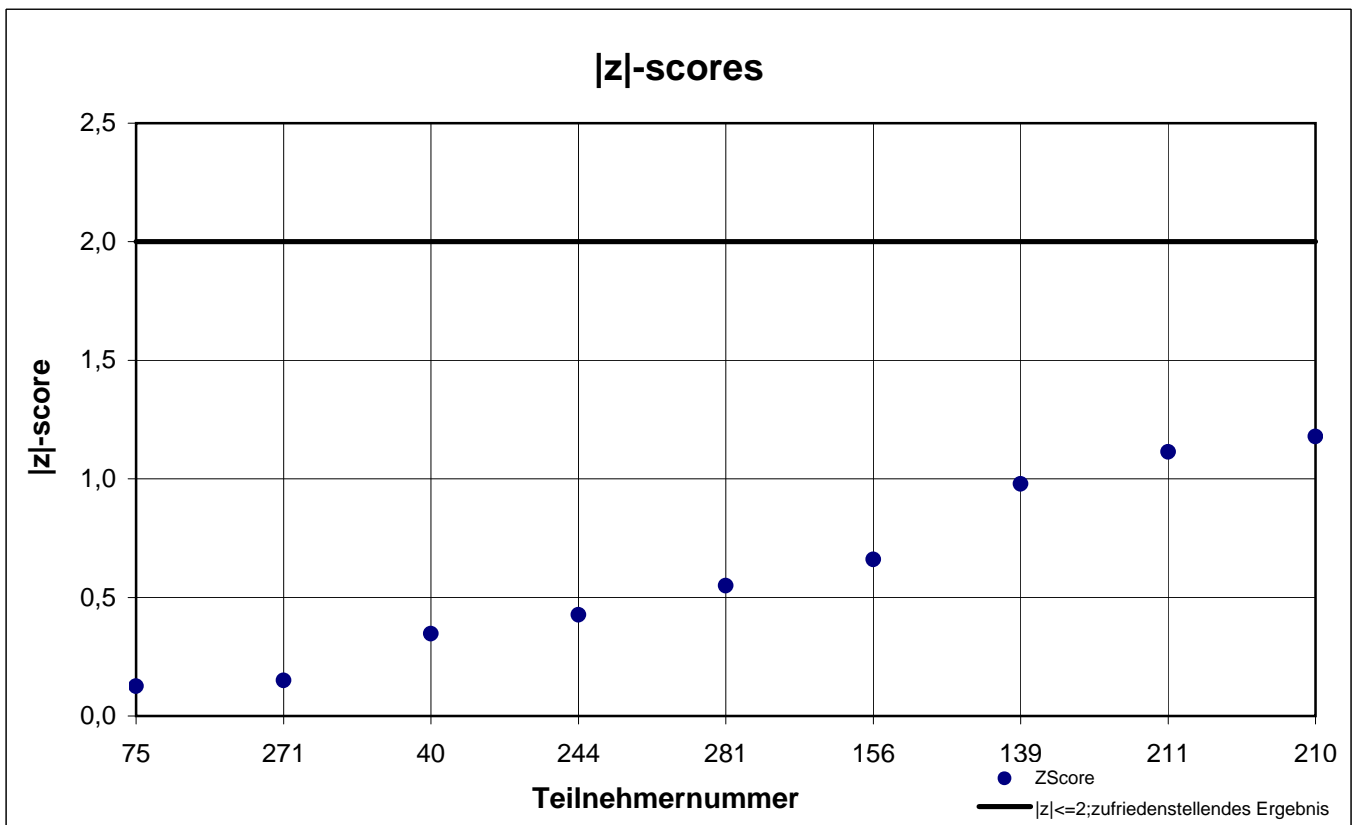
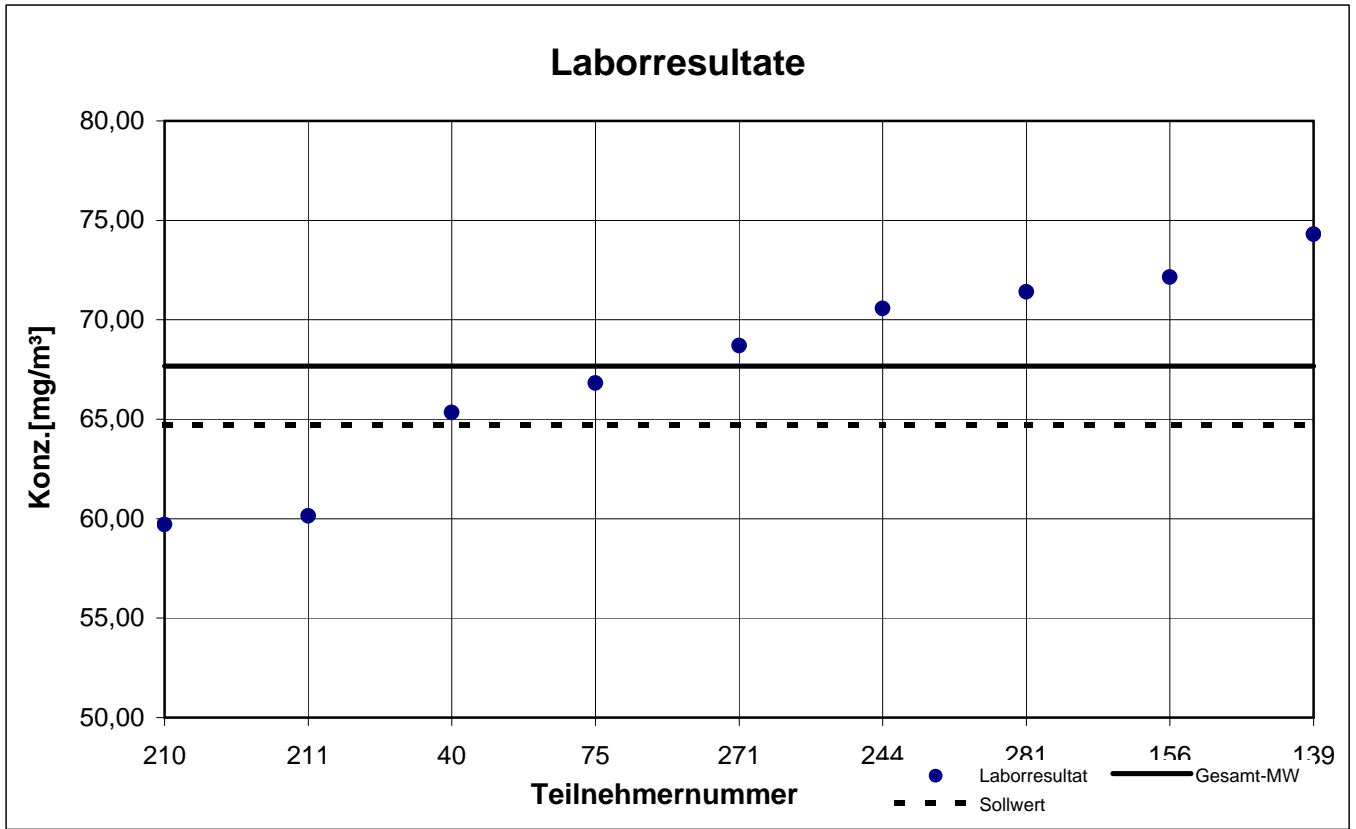
Probe 2

p-Xylol



Probe 2

Toluol



Gesamtauswertung Probe 3

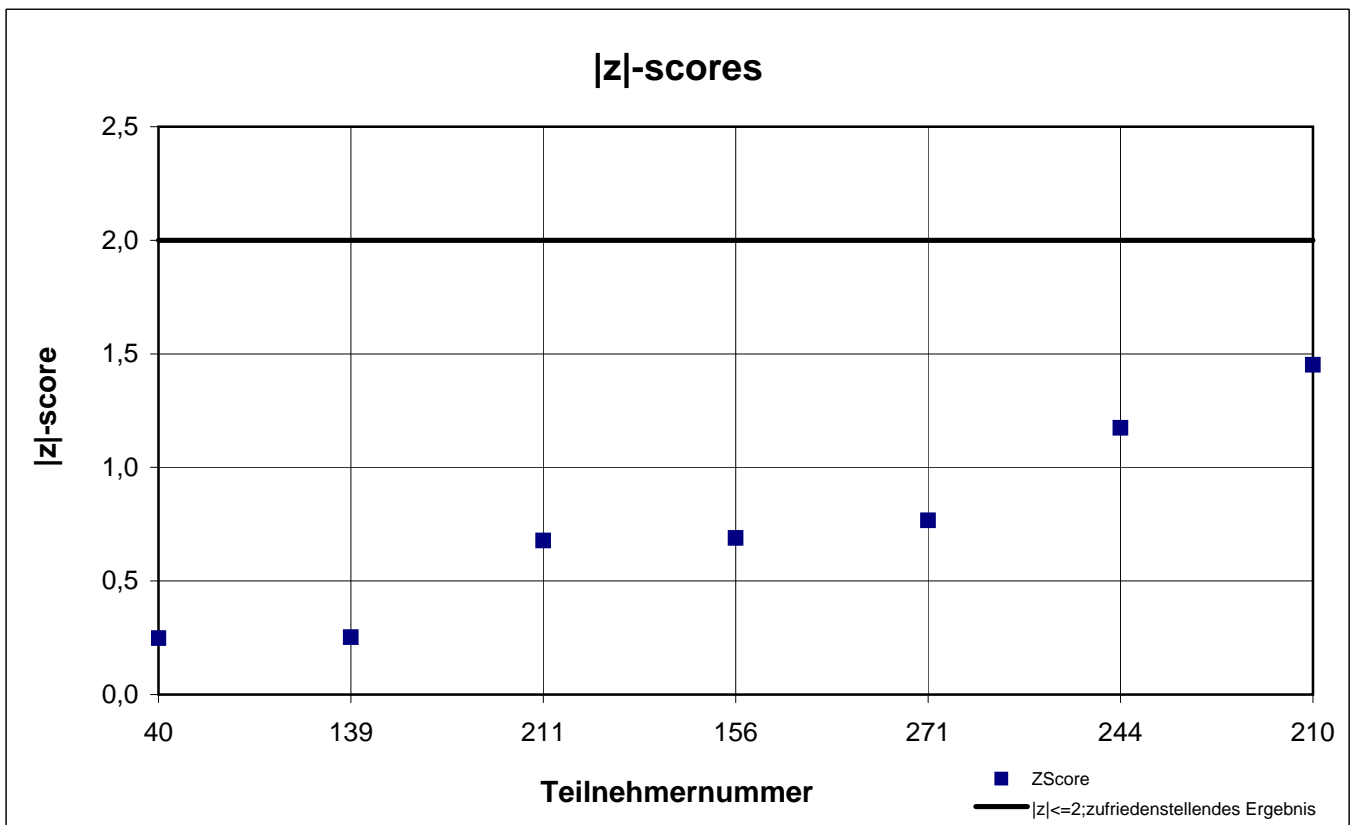
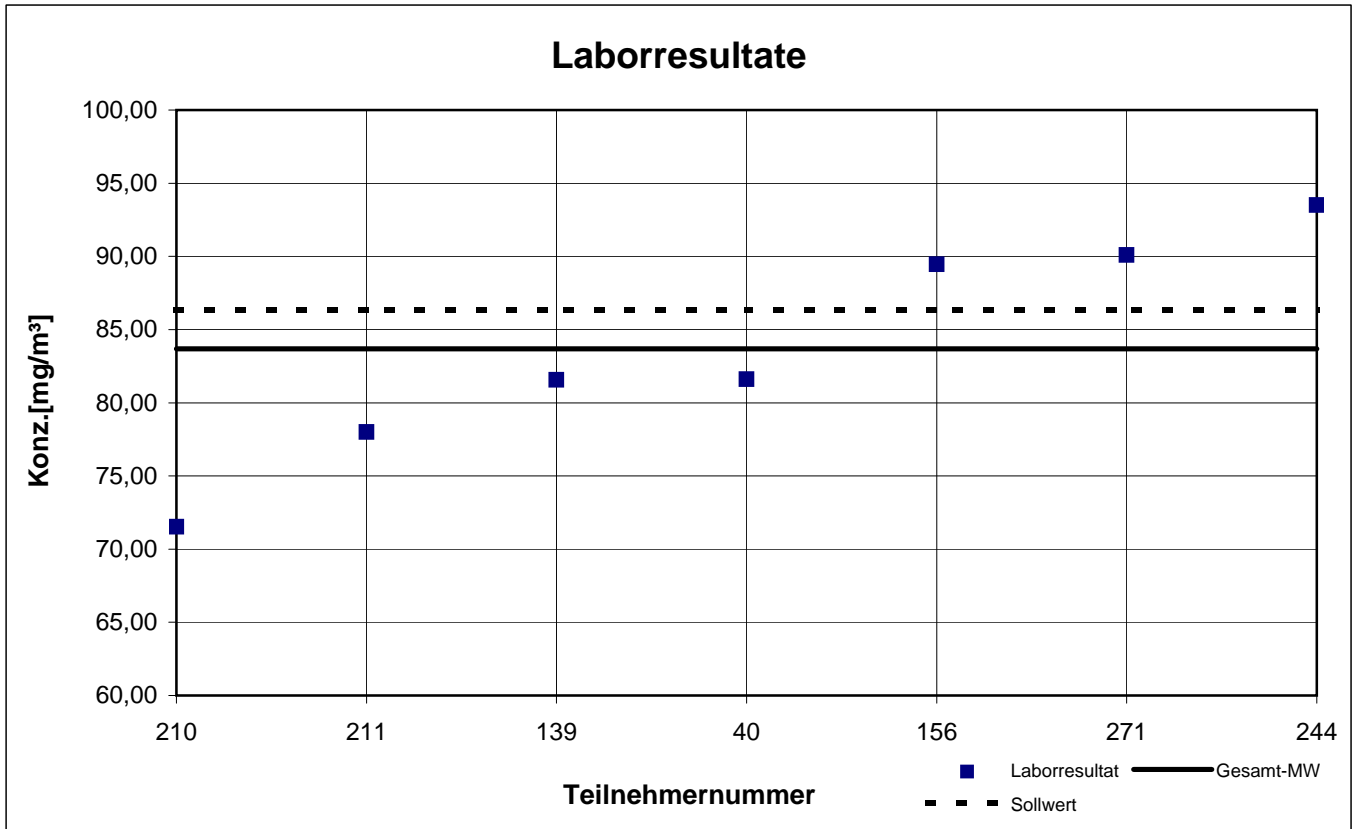
Teilnehmer- nummer	1-Methoxy-2-propanol		2-Butanol		2-Butoxyethanol		Ethanol	
	Labor- resultat [mg/m ³]	z - score	Labor- resultat [mg/m ³]	z - score	Labor- resultat [mg/m ³]	z - score	Labor- resultat [mg/m ³]	z - score
40	81,60	0,2	34,43	2,5	34,43	0,0	118,6	0,5
75	k.A.	k.A.	k.A.	k.A.	k.A.	k.A.	103,0	0,9
139	81,57	0,3	44,60	0,2	36,63	0,7	116,1	0,3
156	89,45	0,7	53,05	1,6	36,40	0,6	114,5	0,2
210	71,53	1,5	49,60	0,9	24,17	3,0	106,2	0,6
211	78,00	0,7	43,12	0,6	27,12	2,1	107,1	0,5
244	93,50	1,2	47,30	0,4	43,00	2,5	116,1	0,3
271	90,10	0,8	47,72	0,4	38,29	1,2	119,9	0,6
281	k.A.	k.A.	k.A.	k.A.	k.A.	k.A.	k.A.	k.A.

Die mit  gekennzeichneten Felder sind Ausreißer!

	1-Methoxy-2- propanol	2-Butanol	2-Butoxy- ethanol	Ethanol
Gesamtmittelwert c_k [mg/m ³]	83,68	45,69	34,29	112,7
Standardabweichung S_k [mg/m ³]	7,741	5,926	6,528	6,327
rel. Standardabweichung [%]	9,25	12,97	19,04	5,61
Sollwert (Belegungskonzentration) [mg/m ³]	86,30	44,70	32,10	110,3

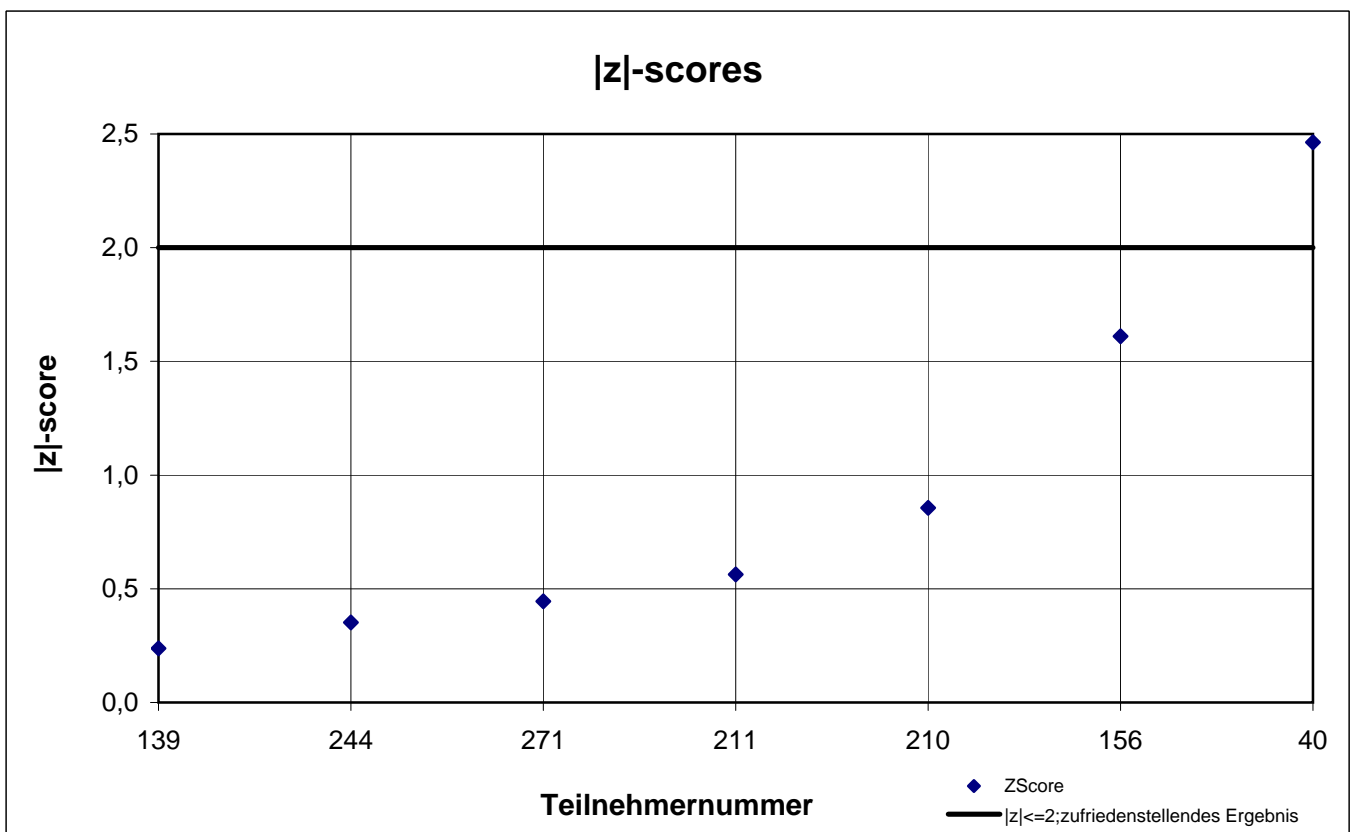
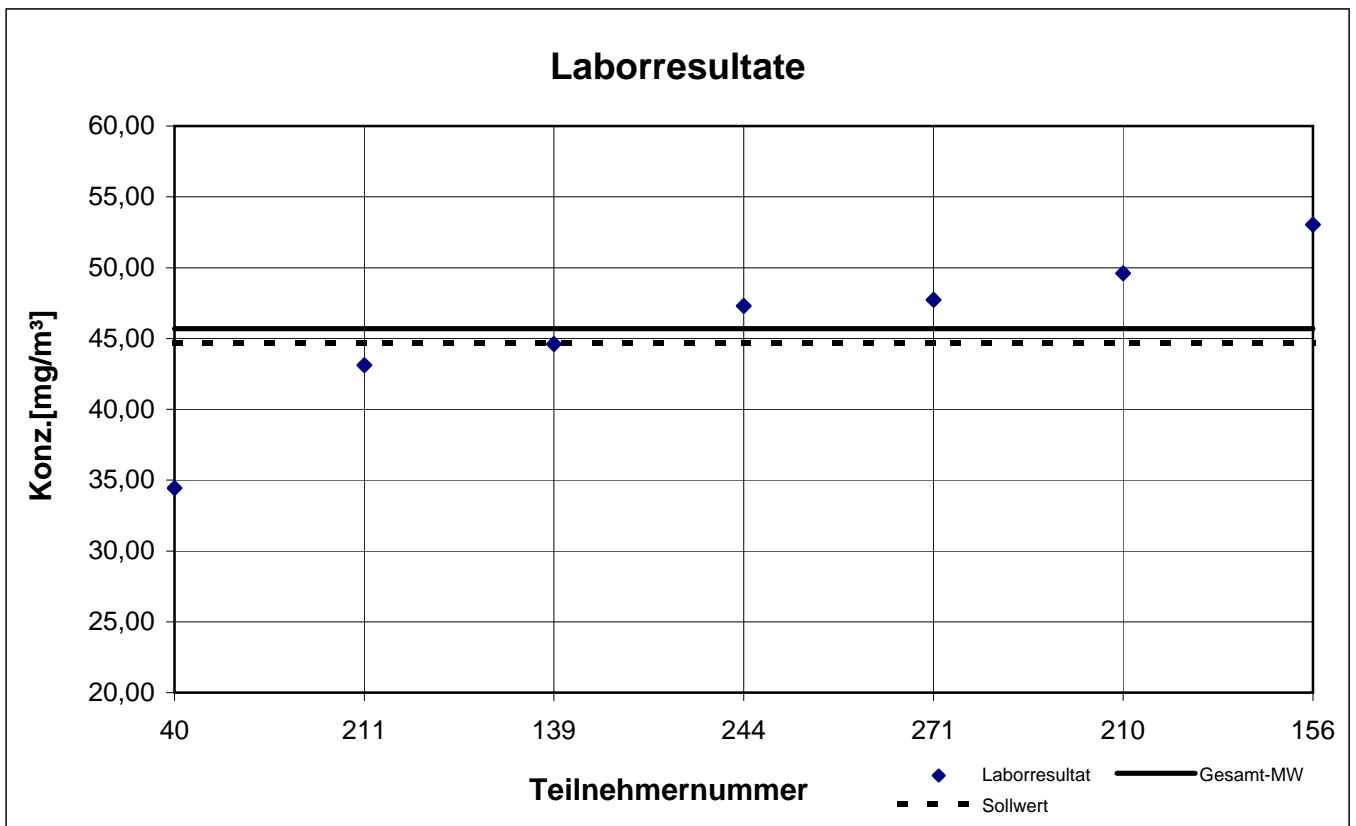
Probe 3

1-Methoxy-2-propanol



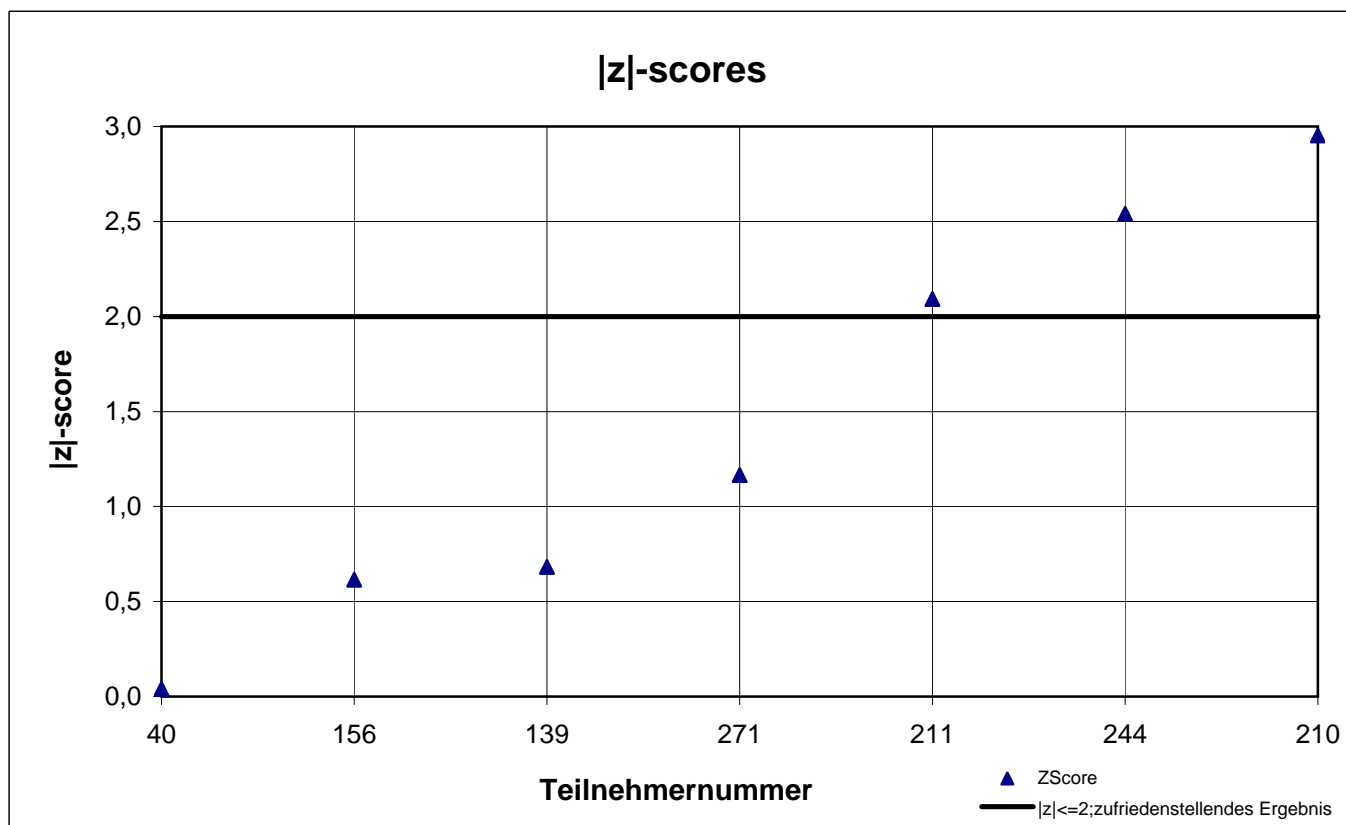
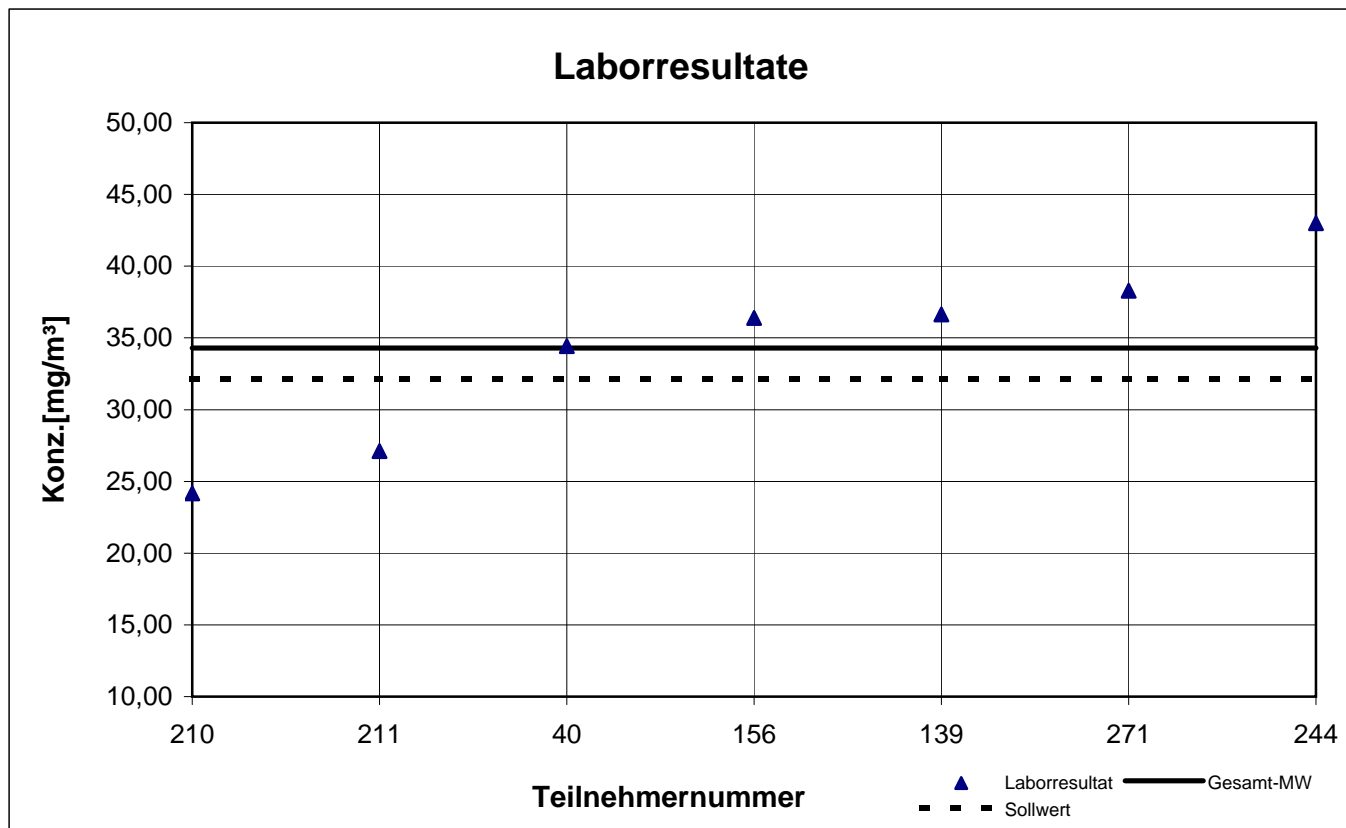
Probe 3

2-Butanol



Probe 3

2-Butoxyethanol



Probe 3

Ethanol

